

St. Joseph's School

Love, Learn, Grow



**Welcome to
Key Stage 2**



Our School Prayer

St. Joseph's is our school.

Teach us Lord, to Love, Learn and Grow together.

Just as you guided your beloved son, Jesus.

Open our hearts to your plans for us and

Show us your path to follow.

Each day, help us to feel your presence among us,

Protecting us on our journey.

Holy Spirit be with us.

St. Joseph pray for us.

Amen

At ST JOSEPH'S WE LOVE, LEARN AND GROW TOGETHER!

LOVE	LEARN	GROW
Love of our faith	Learn about our faith and Jesus	Spiritually
Love of Learning	Achieve our potential	Academically
Love life/the world	Learn from our mistakes	Morally
Love ourselves	Learn who we are / who I am	Confidently
Love others	Learn from others	Socially

Term Dates 2022 / 2023

Advent Term

Friday 2nd September – Tuesday 20th December
Tuesday 6th September children return

Half Term

Monday 24th – Friday 28th October

Lent Term

Wednesday 4th January - Friday 31st March
Thursday 5th January (children return)

Half Term

Monday 13th – Friday 17th February

Pentecost Term

Monday 17th April – Friday 21st July
Childrens' last day Thursday 20th July
Additional inset day – Monday 24th April

Half Term

Monday 29th May -Friday 2nd June
Children return Tuesday 6th June

Year 5 Teachers



Miss Grimshaw



Miss Whelan

Year 6 Teachers



Miss Carroll



Mrs Davidson

Support Staff KS2



Miss Evans
(Y5)



Mrs Bentley
(Y6)

ST JOSEPH'S CURRICULUM

INTENT - LOVE

To inspire in all pupils, regardless of ability and circumstances, a love of learning, a thirst for knowledge and understanding about God, ourselves and our world.

IMPLEMENTATION - LEARN

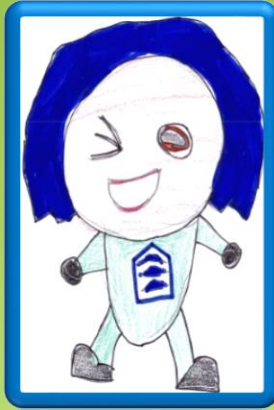
Ensuring a broad, balanced and engaging curriculum that is accessible to all learners.

IMPACT - GROW

Regardless of starting points, all pupils leave each key stage ready to continue their education journey and make a difference in the world.

See website for full curriculum overviews

Our Learning Characteristics



Bounce-back Beth

Reflective Rose

Independent Ian

Teamwork Tim

Curious Chris

Motivated Millie

Curriculum Year 5

See website for full curriculum overviews



Advent 1

M	Tu	We	Th	F	Sa	Su	1000
0	0	0	0	0	0	0	0

Adding and Subtracting

Place value, addition and subtraction

Los Instrumentos

Playing the Djembe

HS2 CROSSSES HERE

Writing persuasive arguments and poems

Butterfly Life Cycle

Life Cycles

Local area

Local area art

Curriculum Year 6

See website for full curriculum overviews



Advent 1

M	1000	100	10	1	0	1	100	1000
0	0	0	0	0	0	0	0	0
1000	100	10	1	0	1	100	1000	10000



Place value and 4 operations



Ancient Greece



Djembe



Greek art



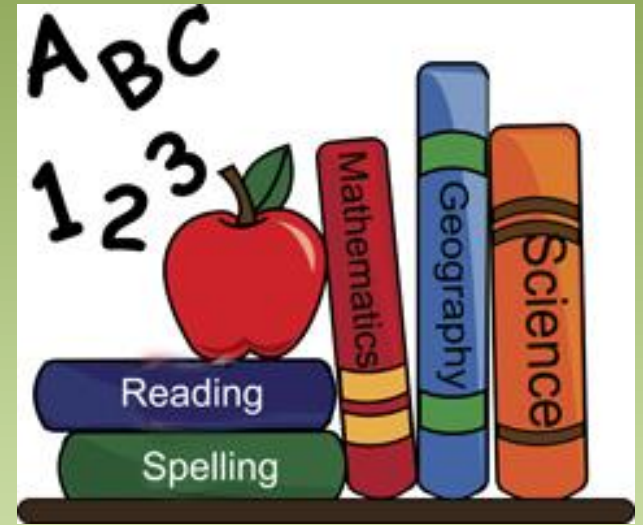
Factual writing



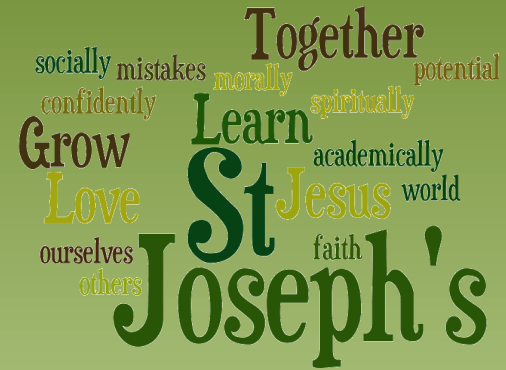
Famous Scientists

A typical week...

- Writing and maths daily
- Reading lessons
- SPAG
- History/Geography work
- RE x 2 per week
- Assemblies and Hymn practice
- Music, computing, Spanish, PSHE, Art/D&T and a visit to the library
- PE x 1 per week (2 per week or Festival)



Expectations



For a safe and happy school, we are expected to:

Arrive at school on time.

Take pride in our school building.

Wear our school uniform with pride.

Look after our belongings.

Be truthful, well-mannered and kind.

Act responsibly and set a good example for others.

Take responsibility for our actions in school, on trips and online.

Keep our school litter free.

Exercise self-control.



HOMework

ENGLISH



SET: MONDAY
DUE: WEDNESDAY

MATHS

WIDER CURRICULUM

SET: WEDNESDAY
DUE: FRIDAY

SET: THURSDAY
DUE: MONDAY



AcceleratedTM
Reader

TIMES TABLES
ROCKSTARS

Sports Festivals

Year 5	Basketball Handball Tag Rugby Athletics	Dr Challoners High School Amersham School The Misbourne School Dr Challoners High School	11 October 2022 23 November 2022 16 March 2023 15 June 2023	9.30 – 12.00 9.30 – 11 1.00 - 3.00 12.30 – 3.00
Year 6	Fitness Basketball Dodgeball	Chalfonts College The Amersham School The Amersham School	29 September 2022 19 October 2022 8 February 2023	12.00 – 2.00 1.30 – 3.00 9.30-11.00

Forest School Dates

5G	5W	6C	6D
Fri PM 21/10 ----half term--- 04/11 11/11 18/11 25/11	Tues PM 18/10 ----half term--- 01/11 08/11 15/11 22/11	Tues PM W/C: 12/09 For 3 weeks	Fri PM W/C: 12/09 For 3 weeks

Key information about Forest School:

Waterproofs

Wellies

Warm clothes (hats, gloves, scarf)

Spare named bag (for muddy clothes)

Stationery

- 2 pencils
- Pencil sharpener
- 30cm ruler
- Blue handwriting pen (not biro)
- Purple pen
- Whiteboard pen
- Pritt Stick
- Eraser
- Pack of coloured pencils



All items to be clearly labelled

Pencil cases should be small enough to fit inside their tray (no Smiggle pencil cases please).



Come in We're
OPEN

Stationery Shop is open
every morning
Key Stage 1 Hall Door

WRITING PENCIL: 60p

HANDWRITING PEN: £1

30CM RULER: 50p

PURPLE PEN: 80p

ERASER: 30p

BASIC SHARPENER: 30p

**SHARPENER WITH CONTAINER FOR
SHARPENINGS: 70p**

GLUE STICK (Pritt): £1.50

DRY WIPE MARKER: 70p

End of day procedures

- Contact details regularly updated via the school office
- Children will only be released to those over the age of 16 – a password will still be required
- Children in Year 5-6 who parents wish them to independently leave the school site must put this in writing (letter / email).

Key Information

- Label school uniform and PE kits (including bags).
- Appropriate clothing for the season (coat, sunhat etc.)
- Children in KS2 can bring fruit/veg for a break time snack. This should be in their school bag not in their lunchbox.
- Water bottle (reusable / **no juice**).

Working Together

- Ensuring children are on time for school and at school every day- school is open from 8.30am (all absences must be reported to the school office via telephone or email by 9am)
- Uniform
- Reading daily
- Providing PE kit (Tuesday (Y5) Wednesday (Y6))
- Homework support

Communication with school

Class teacher

EYFS Leader
Mrs Pugsley

**Years 1-2
Leader**
Mrs Sheppard

**Year 3-4
Leader**
Mrs Fallon

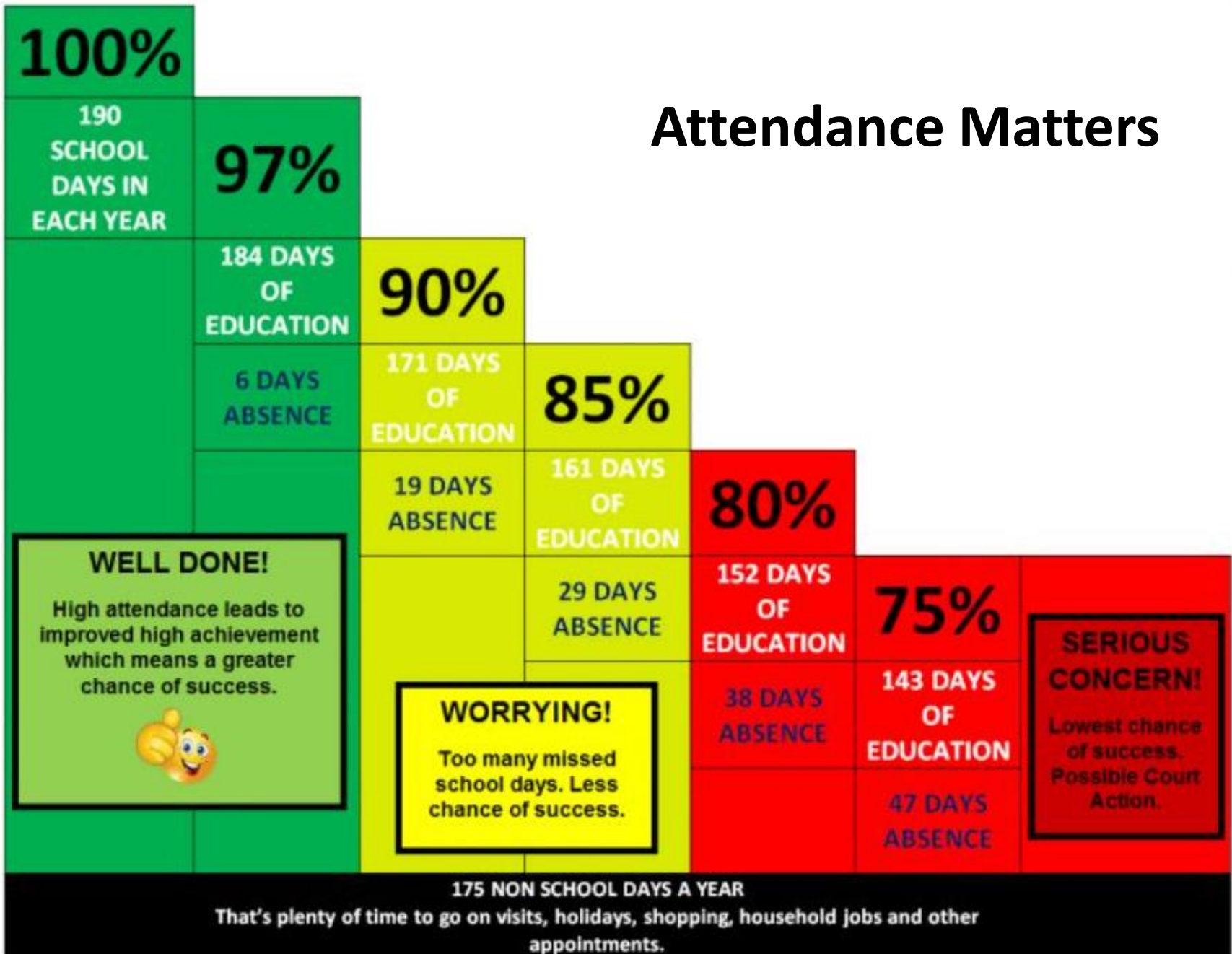
**Years 5-6
Leader**
Miss Carroll

Assistant Headteacher
Mrs Ford (SENCo/Inclusion /
Safeguarding)

Deputy Headteacher
Mrs O’Kane (Curriculum and
Assessment / Behaviour)

Mrs Lovegrove
Headteacher

Attendance Matters



EVERY MINUTE COUNTS

MINUTES LATE PER DAY	EQUIVALENT OF MISSING	HOW MANY LESSONS THIS IS MISSED
5 MINUTES	3.4 SCHOOL DAYS A YEAR	17 LESSONS
10 MINUTES	6.9 SCHOOL DAYS A YEAR	35 LESSONS
15 MINUTES	10.3 SCHOOL DAYS A YEAR	51 LESSONS
20 MINUTES	13.8 SCHOOL DAYS A YEAR	69 LESSONS
30 MINUTES	20.7 SCHOOL DAYS A YEAR	104 LESSONS



Being Punctual

School gates open at 8.30am each morning.

Soft Start is 8.30-8.45am

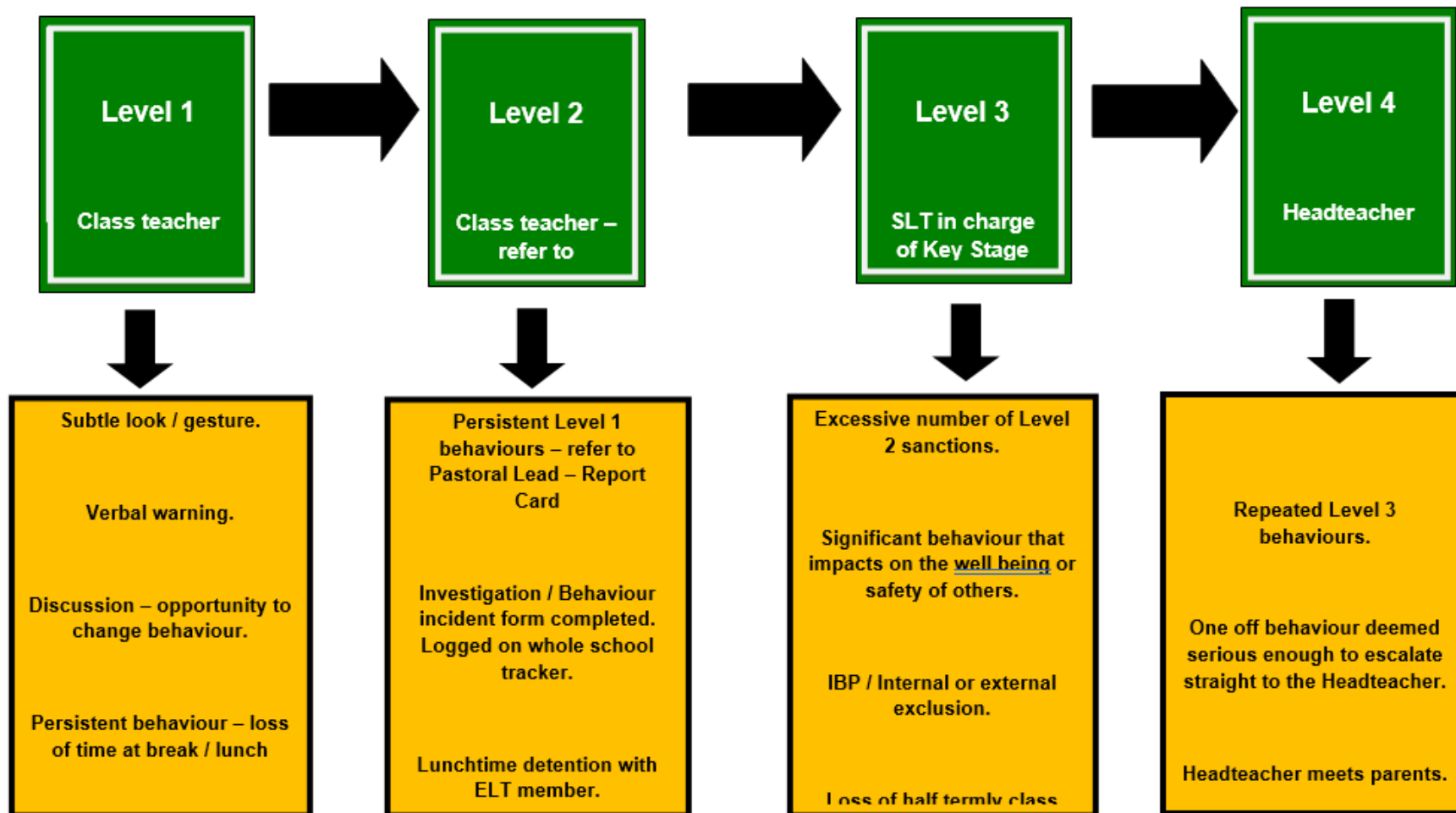
The school gates close at 8.45am

All children should be in their class at 8.45am

What happens in soft start (15 mins each morning)

- An opportunity to read to an adult
- Key areas for development can be targeted e.g. handwriting, arithmetic etc. Vocabulary is developed – Word of the Week morning
- Opportunity to go over spellings
- Key learning takes place in this 15 min slot each morning
- Please be on time for school – children come in late are often distressed / upset when joining the class

GRADUATED RESPONSE TO DEALING WITH BEHAVIOUR



Please see our full Positive Behaviour Policy – on the school website



SAFEGUARDING

Takes precedence over everything else in school.

Mrs Ford (Assistant Headteacher) Safeguarding Lead for the school.

Mrs O’Kane (Deputy Headteacher) Deputy Safeguarding Lead for the school.

Mrs Lovegrove (Headteacher) has overall responsibility for Safeguarding.

If you have any safeguarding concerns please bring them to the attention of one of the members of staff listed above.

Check your emails / texts regularly – this is the main means of communication from school.

Check weekly school newsletter– emailed on Friday.

Check school website and twitter account.

Website: www.stjosephschalfont.school

Twitter: @StJosephsCSP

Facebook: St Joseph's Chalfont St Peter

Tuesday 3.00-3.30pm Parent Drop in session

Please make every effort to attend coffee mornings / assemblies and key parent workshops on curriculum areas to remain informed and support us and your child.

Parking around School

Please be aware that the local Residents' Group have established a communication channel with the Chalfonts Neighbourhood Policing Team reporting all incidents of inconsiderate parking.

Supporting Your Child

- Read to your child as well as them reading to you
- Times tables and number facts
- Use knowledge organisers for regular quizzing
- Quizzing on Accelerated Reader
- The school website has links to additional educational sites and materials that you may wish to access
- Teach them to be independent!

Thank you for coming
and for your
continuing support.

Together
socially mistakes morally potential
confidently
Grow Learn
Love St Jesus academically world
ourselves faith
others Joseph's