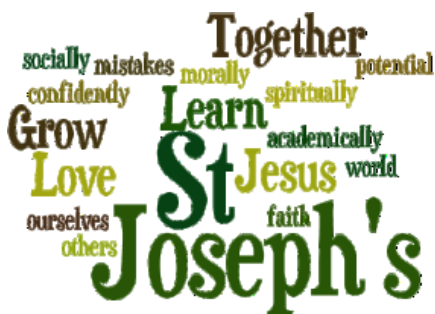


2nd February 2024

St Joseph's Catholic Primary School Newsletter



*Gospel Reading for
Sunday 4th February
Fifth Sunday in Ordinary Time, Year B
Mark 1: 29-39*



Headteacher message

It was a delight to attend the Young Voices Concert at Wembley last night, to see a group of our choir children take part in a wonderfully entertaining event, along with 4,000 other children. It was a really uplifting evening and a joy to watch our children singing and dancing with such enthusiasm. Thank you to Mrs Fallon and Mrs Barugh for organising and facilitating this experience.

Pupil Leadership message

On Monday we had an assembly led by Mrs Lovegrove who brought a special visitor with her [Ged Nolan, who works for CAFOD]. In this assembly we talked about how CAFOD helps other countries by providing basic survival needs, including: water, food, shelter, medication and education. He told us about the countries CAFOD help and showed us some pictures of people that they have helped in the past, most of the countries are located in Africa, South America and some parts of Asia. At the end of the assembly Mrs Lovegrove highlighted our Year 6 charity day, on 15th March and suggested that this may be a charity that some of us consider raising money for.

Harvey and Thomas

Housepoints this week (rolling totals)

St David (251)

St George (253)

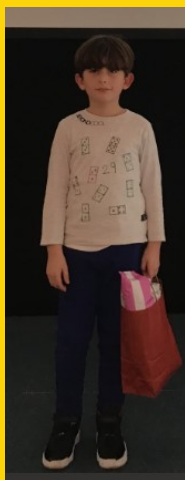
St Patrick (331)

St Andrew (304)

SCHOOL KEY INFORMATION

Attendance—Week Ending 2nd February 2024

CLASS	%	CLASS	%
RA	92.7	RB	95.2
1JB	89.8	1EB	98.4
2E	91.3	2F	94.6
3GS	95.4	3D	96.6
4D	94.1	4H	91.9
5G	94.8	5C	97.6
6W	97.6	6MT	92.4



Attendance Goodie Bag

Our draw for the weekly attendance goody bag for this week went to Martin.

Our highest class attendance this week was 1EB with 98.4% They will have additional play next week!

Whole School Attendance figure this week was ...

94.6

Message from Attendance Officer

It is not acceptable to collect your child from school early. All early collections cause disruption within the class, for both the pupils and the teacher, and can leave the main office area of the school understaffed—this becomes a safeguarding issue.

If you feel, under exceptional circumstances, that you need to collect your child early, please inform myself, the school attendance officer, in advance, with documentation to support the early collection.

Please ensure all appointments, such as the GP, dentist and opticians and any further family events are arranged during holidays, to ensure that all pupils can attend each day until 3pm.



SCHOOL KEY INFORMATION

Social Media

An important letter has been emailed to all parents to alert you to the rise of inappropriate use of social media platforms that some of the children are engaging in. This is having negative implications on some of our children's well being and is causing a distraction from teaching and learning, as time is lost as a consequence of having to deal with children's inappropriate use of these platforms—that age guidance states is 13+ and in some cases 16+.

Please consider very carefully the access your children have to mobile phones and the platforms they are using.

Often they are not mature enough to consider the implications of some of the material they post.



National Online Safety

Punctuality

Being on time is a vital part of life and something we aim to instil in children from the youngest age.

The school day starts, with soft start at 8.30am—where teachers have additional learning opportunities set up within the classroom.

*The school gates close at 8.50am each morning. Adults who monitor the turning circle will leave this area to return to their jobs. Please **DO NOT** leave your child waiting for a gate to open up, as the external doors of the building will be locked and they will have no way of entering the school.*

***YOU MUST** park outside the school grounds **AND ACCOMPANY** your child to the school office to be signed in.*

SCHOOL KEY INFORMATION

Safeguarding—School Gates

The school gates are functioning again.

As a reminder, the timings are as follows:

Open at 08.30—Close at 08.50am

If you arrive after 08.50am—please park outside of the school grounds and escort your child to the school office to sign in.

DO NOT LEAVE YOUR CHILD UNATTENDED

The pedestrian gate will open at 2.45pm to allow access to playgrounds.

The vehicle gates **DO NOT OPEN**

Parking is not permitted on school grounds at any time.

(except for blue badge holders / exceptional circumstances)

If you are collecting from after school clubs—please allow time to park outside of school grounds and collect on foot.

If you are collecting from Busy Living—please use the intercom and the Busy Living team will respond. Busy Living parents are only permitted to park in the top car park. Please do not drive down to car park outside the main school office in the morning or evening.



There are many enquiries regarding when, and when not, to send children to school.

Please see the NHS information page for more information.

[Is my child too ill for school?](#)



Midday Supervisor

We are always looking for additional Midday Supervisors to join our busy lunchtime team.

Do you have time on your hands, looking to re-join the workplace? Monday to Friday 11.45 to 1.15pm, every day or just a couple of days per week.

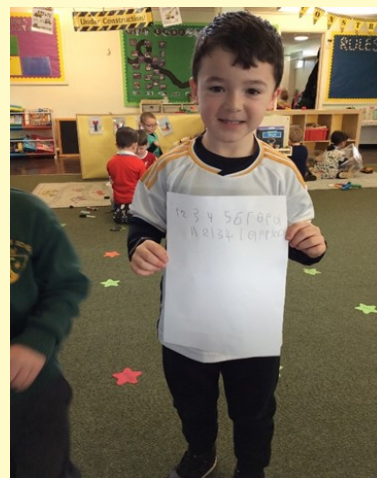
All hands welcome..... To find out more visit the [school website](#) for details, or contact Mrs Smith via office@stjosephschalfont.school.

SCHOOL KEY INFORMATION

We have had a great Number Day at St Joseph's! We all read the story about 365 penguins...a new one arriving each day. We then had penguin themed maths lessons—we have been multiplying penguins and even doing penguin algebra!

The children (and teachers) loved dressing up in our number themed outfits, don't they look fantastic!

Thank you to the parents in year 3 and 4 who joined Mrs Fallon's workshop. If you missed it, the presentation is on the school website under parent workshops.

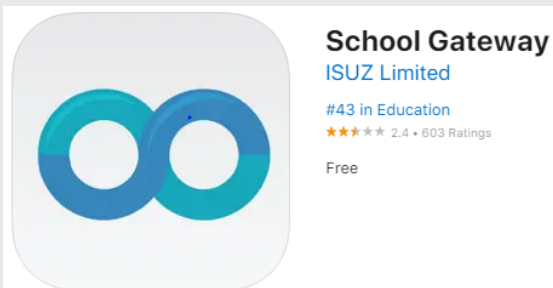


SCHOOL KEY INFORMATION

Email communications are sent to you via

Schoolcomms

To ensure **text messages** are received, please visit the [App Store](#) to download



enter your email address and mobile phone number that you have set up for school.

A PIN number will be sent to you—text messages will appear via this App.

WITHOUT THE APP YOU WILL NOT RECEIVE TEXT MESSAGES

Social Media

Make sure that you keep up to date with all the wonderful and interesting things we are doing in school by regularly checking in to facebook / twitter (X).

There is now so much information on

FOLLOW US



End of the School Day

Please ensure that children remain supervised at the end of the school day. Children are not permitted to play within the Forest School, on the playgrounds or play equipment.

Please ensure that you leave the school grounds promptly once you have collected your children.

Thank you for helping us to keep your children safe.

School Uniform

As part of joining the school, parents are signing up to abide by and agree to the school policies and procedures. These are all available on the school website and are shared with parents when children are offered a place at St. Joseph's.

Our school uniform is part of our common identity and as part of our standards for the children, we expect everyone to abide by the uniform policy.

Below is the winter school uniform for Reception—Year 6. All children are expected to be in the correct school uniform. Please note the list below and ensure that your child is compliant.

Reception – Year 6		
	Item	Available from
Winter		
	Dark green V-necked jumper with school crest	Earth uniform
	Dark green tie with thin gold double stripe	Earth uniform
	White cotton shirt	Any stockist
	Dark grey full-length school trousers / Dark grey pleated, full or A-line knee-length skirt or pinafore	Any stockist
	Dark grey or white knee/ankle socks or tights (no branded logos)	Any stockist
	Black shoes (no branded logos)	Any stockist
Outdoor Wear		
	Black / navy coat (plain – no branded logos)	Any stockist
	Dark green shower-proof jacket or fleece with school crest	Earth uniform
PE and Games		
	Dark green gym bag with school crest	Earth uniform
	Black (plain – no branded logos) loose fitting shorts	Any stockist
	Green T-shirt with gold school crest	Earth uniform
	Black (plain – no branded logos) tracksuit bottoms	Any stockist
	Black (plain – no branded logos) sweatshirt	Any stockist
	Trainers (suitable for sporting activity)	Any stockist
School bag		
	Dark green book bag with school crest (Infants)	Earth uniform
	Dark green rucksack (small or large) with school crest (Juniors)	Earth uniform

Uniform can be purchased from [EarthUniform](https://www.earthuniform.com) or via our previously owned school uniform shop (on the school site).

Please can you particularly note—trainers are not part of school uniform (except for PE).

School coats should be either black or navy.

Please be aware teachers will be following up on ensuring that all children have the appropriate uniform from Monday 5th February.

Chiltern Arts Art & Poetry Competitions 2024

Celebrate the heroes in your world by creating artwork and poetry that explores real human stories

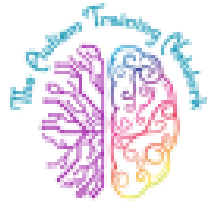
Open to all ages

To enter and for more details visit
chilternarts.com/competitions-2024

Deadline: 29th February 2024

A photograph of three children from behind, running on a paved road that stretches into the distance under a cloudy sky. The child on the left wears a yellow cape, the child in the middle wears a pink cape, and the child on the right wears a red cape. They are all pointing forward with their right arms. The text 'OUR EVERYDAY HEROES' is overlaid in a stylized font across the bottom half of the image. There are also some white scribbles in the bottom left corner.

**OUR
EVERYDAY
HEROES**



Autism Empowerment Webinar

This one-hour lunchtime webinar is a brief exploration of how Autism can present, the history of Autism, diagnosis as well as differences in communication and social interaction. We will also be looking at how the environment can impact on someone with sensory processing challenges.

The main aim of this webinar is to focus on the many strengths autistic individuals have and how we can increase understanding and Neuro-inclusivity through education and raising awareness.

Webinars are held on Zoom on the following dates:

Thursday 29th February 12:30 to 13:30

Friday 29th March 12:30 to 13:30

Friday 26th April 12:30 to 13:30

At the end of the webinar, you will receive a certificate of attendance that will be emailed to your given email address.

The cost of this one-hour webinar is only £5.50!

To book your place on the webinar please either scan the QR code below or go to: www.theautismtrainingnetwork.com/training

"For every person who understands Autism better, another Autistic person will be happier." -

Libby Scott, Autistic Author (at age 11)



Essential Equipment List

Please can parents have a check this weekend to ensure that your child has all the correct stationery they need for learning.

Please see the list of essential equipment below —all of which are available from the school stationery shop.

We have just had a restock and the shop is open at the KS1 Hall door at 8.30am each morning.



Pritt Stick Glue	£1.50
Highlighter	£1
Sharpener	70p / 30p
Ruler	50p
Eraser	30p
Handwriting Pen	£1
Pencil	30p
Purple Pen	50p

Essential Equipment List

- 2-3 hb pencils
- pencil sharpener
- eraser
- ruler (30cm) non-foldable
- small selection of colouring pencils
- a glue stick
- dry wipe marker
- white board eraser
- purple pen (KS2)
- highlighter (KS2)

Reminder—pencil cases should be small / plain (not Smiggle or oversized) as these do not fit in the pupil's trays and often cause a distraction from learning.

Birthday or special event treats

Under no circumstances should any sweets, cakes, treats for birthdays or other special events be given out on school premises.

There are numerous children in school with very severe allergies and what you believe may be a nice thing to do, innocently giving them a treat, could potentially be life-threatening.

Please do not send in anything for staff to give out and do not distribute anything to children on the playground before or after school.

Thank you to all those who attended the

Multiplications Timetables Check Workshop this morning.

All workshop presentations are published on the school website. You will find these under the parents tab, where there is a section for parent workshops.

Nothing substitutes actually attending and hearing the presentations, but this will provide an overview of sessions if you are unable to attend.

St. Joseph's School Prayer

Our School Prayer

St. Joseph's is our school.

Teach us Lord, to Love, Learn and Grow together.

Just as you guided your beloved son, Jesus.

Open our hearts to your plans for us and

Show us your path to follow.

Each day, help us to feel your presence among us,

Protecting us on our journey.

Holy Spirit be with us.

St. Joseph pray for us. Amen



*Have a lovely weekend -
St. Joseph's School*

