

St. Joseph's School/ Love, Learn, Grow



**Welcome to
Key Stage 1**



Our School Prayer

St. Joseph's is our school.

Teach us Lord, to Love, Learn and Grow together.

Just as you guided your beloved son, Jesus.

Open our hearts to your plans for us and

Show us your path to follow.

Each day, help us to feel your presence among us,

Protecting us on our journey.

Holy Spirit be with us.

St. Joseph pray for us.

Amen

At ST JOSEPH'S WE LOVE, LEARN AND GROW TOGETHER!

LOVE	LEARN	GROW
Love of our faith	Learn about our faith and Jesus	Spiritually
Love of Learning	Achieve our potential	Academically
Love life/the world	Learn from our mistakes	Morally
Love ourselves	Learn who we are / who I am	Confidently
Love others	Learn from others	Socially

Term Dates 2022 / 2023

Advent Term

Tuesday 6th September – Tuesday 20th December
Tuesday 6th September children return

Half Term

Monday 24th – Friday 28th October

Lent Term

Wednesday 4th January - Friday 31st March
Thursday 5th January (children return)

Half Term

Monday 13th – Friday 17th February

Pentecost Term

Monday 17th April – Friday 21st July
Children's last day Thursday 20th July
Additional inset day – Monday 24th April

Half Term

Monday 29th May -Friday 2nd June
Children return Tuesday 6th June

Year 1 Staff Team



Miss Bailey



Mrs Coyle



Mrs Ford



Miss Edwards



Mrs Soper



Mrs Daly

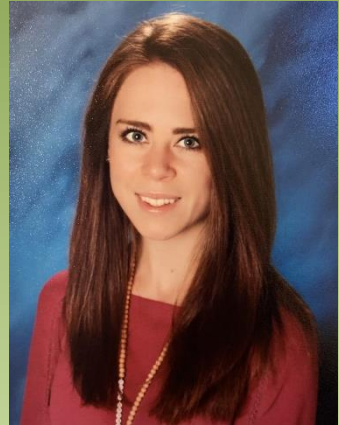


Mrs Rose

Year 2 Staff Team



Miss Foxe
Year 2 Class teacher



Mrs Harmady
Year 2 Class teacher



Mrs Kumar



Mrs Hart



Mrs Devine

ST JOSEPH'S CURRICULUM

INTENT - LOVE

To inspire in all pupils, regardless of ability and circumstances, a love of learning, a thirst for knowledge and understanding about God, ourselves and our world.

IMPLEMENTATION - LEARN

Ensuring a broad, balanced and engaging curriculum that is accessible to all learners.

IMPACT - GROW

Regardless of starting points, all pupils leave each key stage ready to continue their education journey and make a difference in the world.

See website for full curriculum overviews

Our Learning Characteristics



Bounce-back Beth

Reflective Rose

Independent Ian

Teamwork Tim

Curious Chris

Motivated Millie

Curriculum Year 1

See website for full curriculum overviews

Advent

World Journeys

Observe changes across the four seasons and describe weather associated with them and how day length varies. Seaside collage, Seaside themed day.

The Greatest Explorers (with a focus on transport)

First aeroplane flight, Rainhill Trials of Stephenson's Rocket, Isaac Newton*, make an image with a moving part.

Lent

My Family

Explore similarities and differences between their own lives and their grandparents lives', distinguish between an object and the material from which it is made and identify and name a variety of everyday materials, make a sandwich.

Our Local Area

Develop local knowledge based on the view from the school, Identify and name a variety of common wild and garden plants, including deciduous and evergreen trees, drawing & digital media creating a sunflower picture based on the artist: Van Gough.

Pentecost

The Greatest Explorers

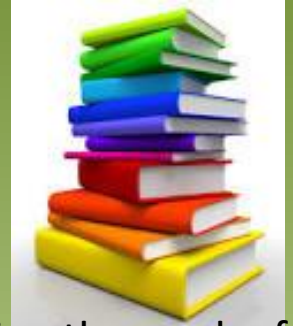
Investigate the lives and journeys of five explorers from various eras, compare and describe differences in their own features (eye, hair, skin colour, etc.) and recognise that humans have many similarities. design and build a bee house.

Animals and their Habitats

Look at animals who live in 5 of our continents looking at the landscapes and the animals homes, identify and name a variety of common animals including fish, amphibians, reptiles, birds and mammals.



Curriculum Year 2



See website for full curriculum overviews

Advent

Heroes

We learn about historical figures such as Florence Nightingale, and even exploring the work of famous scientists such as Alexander Fleming.

Fire! Fire!

The children will be learning about Great Fire of London in History, and write our own newspaper reports.

Lent

Antarctica- The children learn about habitats and write a letter to London zoo. In Geography we compare Antarctica to the UK and we also create some beautiful penguin art.

Pentecost

Journey of Food

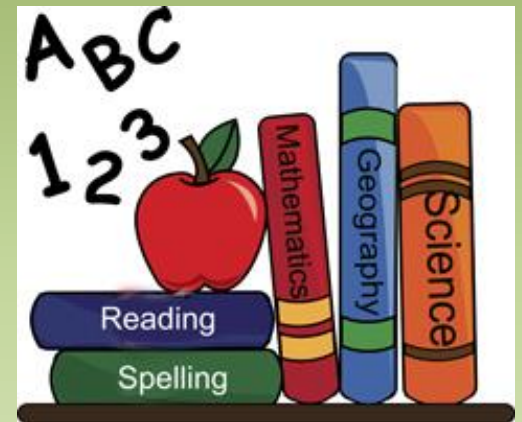
The children will look at the journey of food. They will study what countries food comes from around the world.

Wonders of the world

We learn all about the seven wonders of the world and talk about the countries they are in. The children learn to research and present their information. In science we explore animal adaptation.

A typical week...

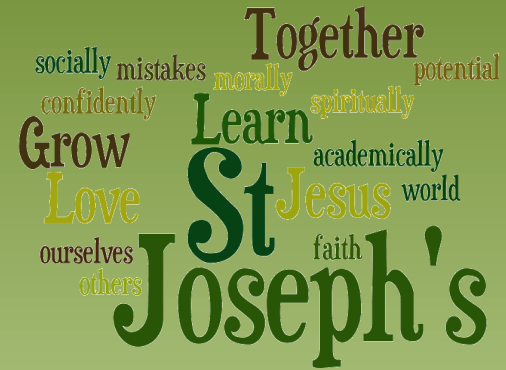
- English (include phonics/ SPAG) and Maths daily
- Reading lessons
- Topic work
- RE x 2 per week
- Assemblies and Hymn practice
- Music, ICT, PSHE and a visit to the Library
- PE x 1 per week (2 per week or Festival)





- Last July – assessments
- 4 weeks children are in very targeted groups to recap and develop knowledge of phonic sounds.
- Speed recognition / decoding in words and encoding for spelling.
- Daily sessions of 30 mins
- Daily 30 mins of handwriting.
- Further assessment after 4 weeks, when we will implement 1 hour lessons per day and will incorporate the RW Inc Reading Scheme.
- **Parents' workshop just before we implement the full programme – encourage you to make every effort to attend this session. Date will be published later this week.**

Expectations



For a safe and happy school, we are expected to:

Arrive at school on time.

Take pride in our school building.

Wear our school uniform with pride.

Look after our belongings.

Be truthful, well-mannered and kind.

Act responsibly and set a good example for others.

Take responsibility for our actions in school, on trips and online.

Keep our school litter free.

Exercise self-control.

HOMework



ENGLISH



Hwk will be set in line with
the RWInc Programme

MATHS

WIDER CURRICULUM

SET: WEDNESDAY
DUE: FRIDAY

SET: THURSDAY
DUE: MONDAY

Year 2



AcceleratedTM
Reader

Year 2

TIMES TABLES
ROCKSTARS

Key Dates

Year 1 Dates	Events
1 st November 7 th December December (TBC) January (TBC) July (TBC)	Science Museum KS1 Nativity Cinderella Wycombe Swan Local Area walk Woburn Safari Park
Year 2 Dates	Events
7 th December December (TBC) January (TBC) July (TBC)	KS1 Nativity Cinderella Wycombe Swan Local Area walk Year 2 End of Year Assembly

Sports Festivals

Year 1

Date	Festival	Venue	Time
4 th October 22	Orienteering	Dr Challoners High School	12.30-2.30
23 rd January 23	Dance	Chalfont Community College	9.30-11.30
10 th May 23	Athletics	The Misbourne School	1.00-3.00

Year 2

Date	Festival	Venue	Time
28.11.22	Playground Games	Chalfont Community College	9.45-11.45
19.1.23	Yr 2 Games	Chalfont Community College	9.30-2.30
24.1.23	Multiskills	Dr Challoners High School	12.30-2.30

Forest School Dates

1CF	1B	2F	2H
Tuesday 25 th April — Tuesday 16 th May	Friday 28 th April — Friday 19 th May	Tuesday 7 th March — Tuesday 18 th April	Friday 10 th March — Friday 21 st April

Key information about Forest School:

- Forest School is a child-centred inspirational learning process, that offers opportunities for holistic growth through weekly sessions.
- It supports play, exploration and risk taking.
- Taking part in forest school allows your child to develop confidence and self-esteem through learner inspired, hands-on experiences in a natural setting.

Stationery

- 2 Pencils
- Pencil sharpener
- Whiteboard pen
- Pritt Stick
- Eraser
- Pack of coloured pencils
- Purple pencil for editing



All items to be clearly labelled

Pencil cases should be small enough to fit inside their tray (no Smiggle pencil cases please).



Come in We're
OPEN

Stationery Shop is open
every morning
Key Stage 1 Hall Door

WRITING PENCIL: 60p

HANDWRITING PEN: £1

30CM RULER: 50p

PURPLE PEN: 80p

ERASER: 30p

BASIC SHARPENER: 30p

**SHARPENER WITH CONTAINER FOR
SHARPENINGS: 70p**

GLUE STICK (Pritt): £1.50

DRY WIPE MARKER: 70p

End of day procedures

- Passwords to be confirmed with new class teacher – important for other people collecting your child.
- Contact details regularly updated via the school office
- Children will only be released to those over the age of 16 (Years Reception – Year 4).

Key Information / reminders

- Label school uniform and PE kits.
- Appropriate clothing for the season (coat, sunhat etc.)
- Fruit is provided at break times for KS1 Children.
- Water bottle (reusable container / **no juice**).

Working Together

- Ensuring children are on time for school and at school every day- school is open from 8.30am (all absences must be reported to the school office via telephone or email by 9am)
- Uniform
- Reading daily
- Providing PE kit (Year 1 Wednesday & Year 2 Tuesday)
- Homework support – not over supporting
- Support in school – volunteers
- Label school uniform and PE kit

Communication with school

Class teacher

EYFS Leader
Mrs Pugsley

**Years 1-2
Leader**
Mrs Sheppard

**Year 3-4
Leader**
Mrs Fallon

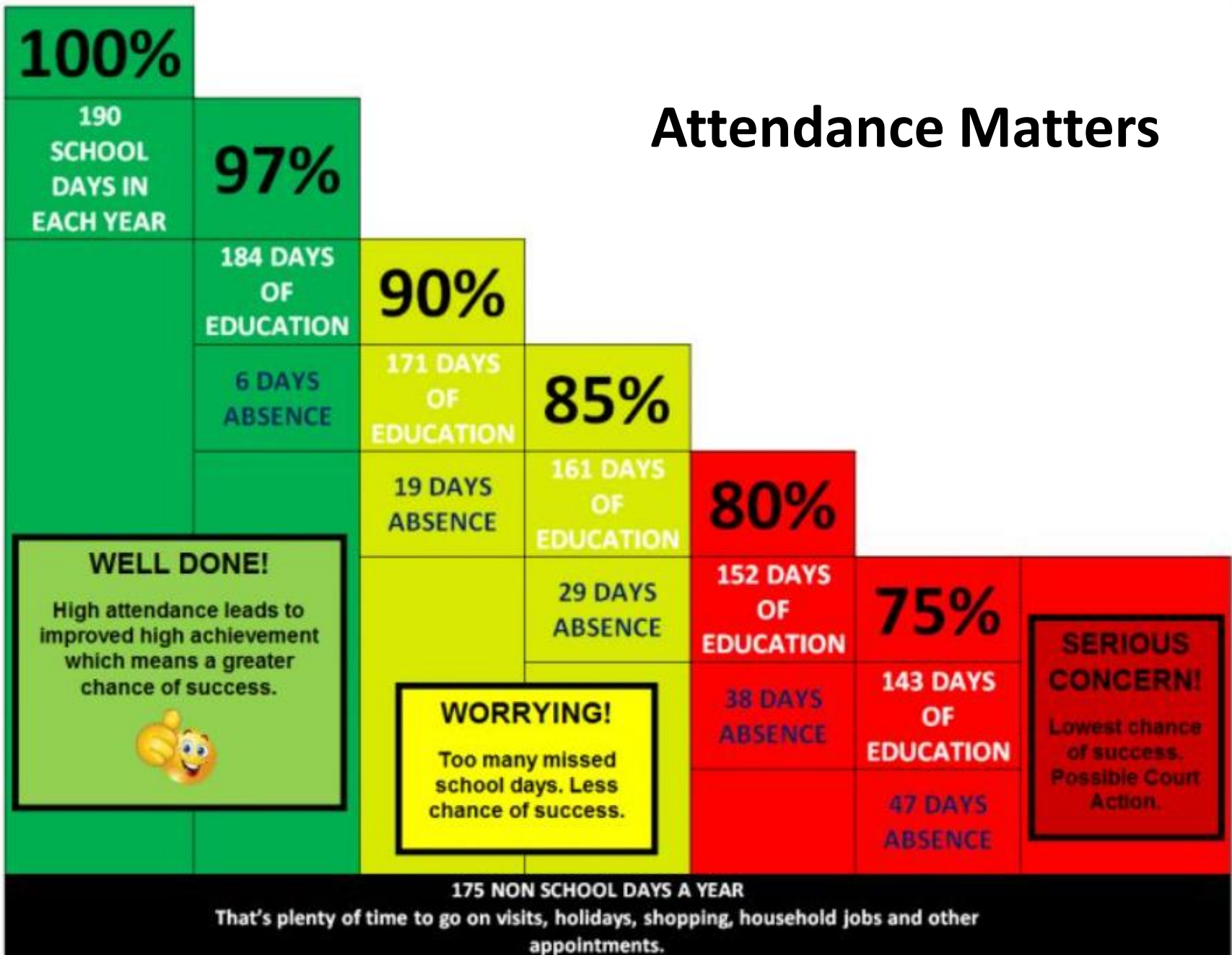
**Years 5-6
Leader**
Miss Carroll

Assistant Headteacher
Mrs Ford (SENCo/Inclusion /
Safeguarding)

Deputy Headteacher
Mrs O’Kane (Curriculum and
Assessment / Behaviour)

Mrs Lovegrove
Headteacher

Attendance Matters



EVERY MINUTE COUNTS

MINUTES LATE PER DAY	EQUIVALENT OF MISSING	HOW MANY LESSONS THIS IS MISSED
5 MINUTES	3.4 SCHOOL DAYS A YEAR	17 LESSONS
10 MINUTES	6.9 SCHOOL DAYS A YEAR	35 LESSONS
15 MINUTES	10.3 SCHOOL DAYS A YEAR	51 LESSONS
20 MINUTES	13.8 SCHOOL DAYS A YEAR	69 LESSONS
30 MINUTES	20.7 SCHOOL DAYS A YEAR	104 LESSONS



Being Punctual

School gates open at 8.30am each morning.

Soft Start is 8.30-8.45am

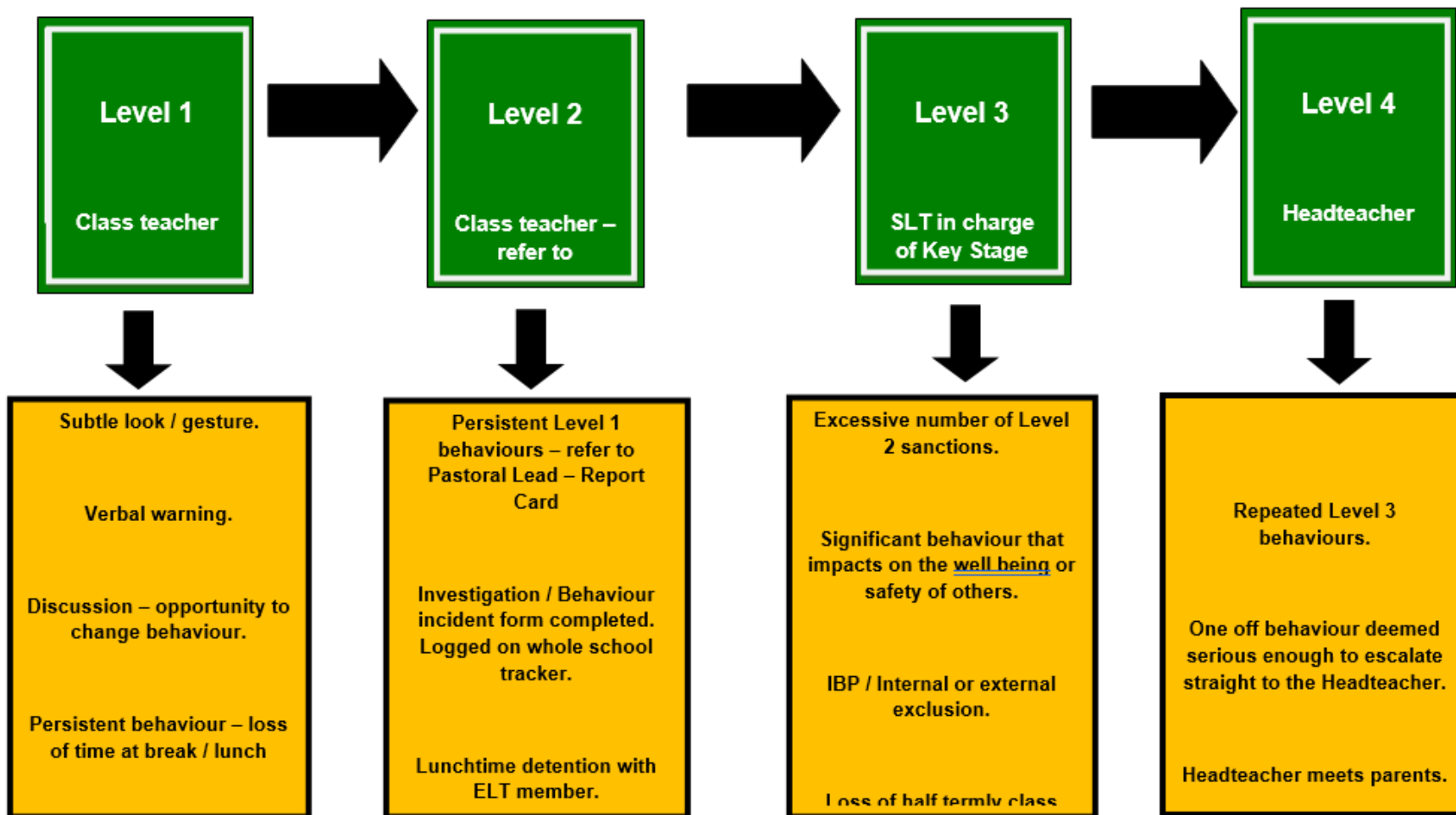
The school gates close at 8.45am

All children should be in their class at 8.45am

What happens in soft start (15 mins each morning)

- An opportunity to read to an adult
- Key areas for development can be targeted e.g. handwriting, arithmetic etc. Vocabulary is developed – Opportunity to go over spellings
- Finish off some prior key learning Please be on time for school – children come in late are often distressed / upset when joining the class

GRADUATED RESPONSE TO DEALING WITH BEHAVIOUR



Please see our full Positive Behaviour Policy – on the school website



SAFEGUARDING

Takes precedence over everything else in school.

Mrs Ford (Assistant Headteacher) Safeguarding Lead for the school.

Mrs O’Kane (Deputy Headteacher) Deputy Safeguarding Lead for the school.

Mrs Lovegrove (Headteacher) has overall responsibility for Safeguarding.

If you have any safeguarding concerns please bring them to the attention of one of the members of staff listed above.

Check your emails / texts regularly – this is the main means of communication from school.

Check weekly school newsletter– emailed on Friday.

Check school website and twitter account.

<https://www.stjosephschalfont.school/>

<https://www.twitter.com/StJosephsCSP>

Tuesday 3.00-3.30pm Parent Drop in session

Please make every effort to attend coffee mornings / assemblies and key parent workshops on curriculum areas to remain informed and support us and your child.

Parking around School

Please be aware that the local Residents' Group have established a communication channel with the Chalfonts Neighbourhood Policing Team reporting all incidents of inconsiderate parking.

Supporting Your Child

- Read to your child as well as them reading to you.
- Counting in 2's, 5's and 10's, number bonds to 10/20, recognise numbers up to 50.
- Number Bond and Times Tables.
- Fine motor skills- e.g. lego, knex, cutting and making things, dot to dot.
- Recap phonics sounds with your children- phonics information will be added to the school website.
- The website has links to additional educational sites and materials that you may wish to access.

Thank you for coming
and for your
continuing support.

Together
socially mistakes morally potential
confidently
Grow Learn
Love St Jesus academically world
ourselves faith
others Joseph's